





CZECH PRODUCER



In 1990, my father Miroslav Chudej founded our company, at that time he had no idea that in less than 30 years the company will become one of the leaders manufacturers of street and floor drains.

Me, as his successor I underwent everything and I started from scratch, through production to the tool shop. At that time, because of the father's enthusiasm, diligence and patience, I tried to develop and gain my own experience and prepare for further development of the company in the future.

In 2015, when my father died, I took over the company and in cooperation with the whole team of my collaborators we continue the way my father started.

At present, company Miroslav Chuděj s.r.o. sells its products not only in the Czech and Slovak Republics, but over the world.

My personal mission is to continue production quality and reliable products. Thank you to all of our customers for their cooperation.

Miroslav Chuděj  
company owner



FOR-TOP Skirting board trim

page 4



Wall brackets for plastic pipes

page 8



Wall brackets for copper pipes

page 12



Floor brackets

page 16



Hammer-in plastic dowels

page 17



Pipe trims (rosettes)

page 18



Toilet connectors

page 20

>FOR-TOP SKIRTING BOARD TRIMS<



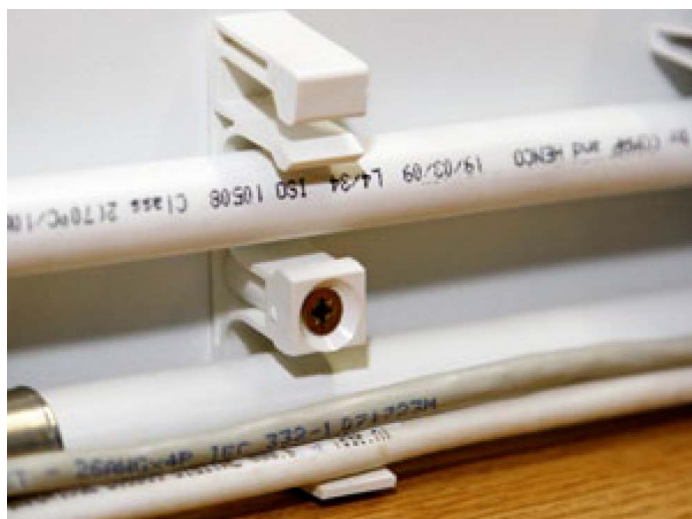


# FOR-TOP SKIRTING BOARD TRIMS

FOR-TOP systems allow heating and cable ducts to be covered easily and fast with a skirting board. They are suitable for use in reconstructions and modernization as well as in new structures. They are made from PVC.

## BENEFITS:

- ✓ easy to assemble and disassemble
- ✓ without cutting grooves in the wall
- ✓ without the need for masonry and painting work
- ✓ 5 colour of design
- ✓ suitable for pipes with diameter 12 - 22mm
- ✓ easy access for duct repair
- ✓ boards made of heat-resistant PVC
- ✓ bracket and fitting made from PA and PS



# ACCESSORIES FOR SKIRTING BOARD TRIMS



Inner corner



Outer corner



End piece - right



End piece - left



Connecting piece



Connecting trim



Bracket

## COLOUR RANGE



White



Maple



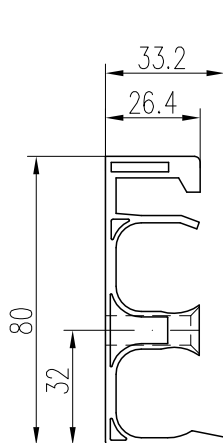
Beech



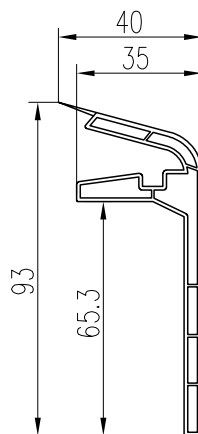
Oak



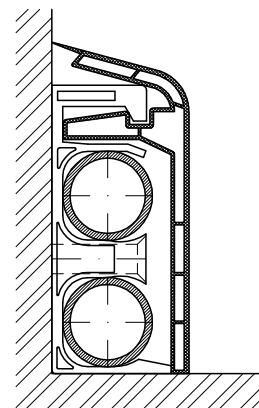
Cherry



Bracket



Trim

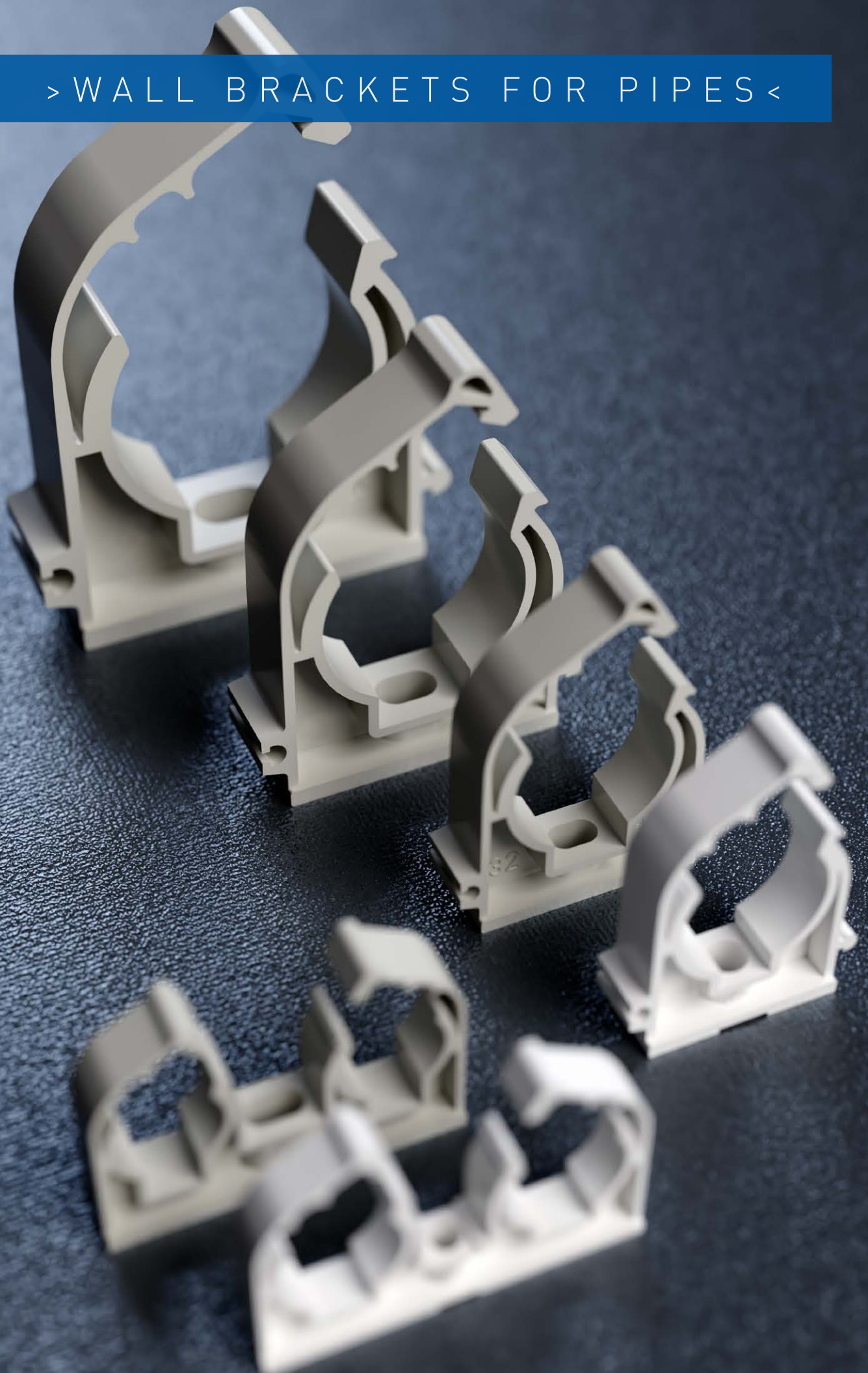


Cross-section of pipe with skirting board

# ACCESSORIES FOR SKIRTING BOARD TRIMS

PART NUMBER	NAME	PIECES/PACKAGING	WEIGHT [kg/pcs]
<b>SKIRTING BOARD (lengths 2 m and 4 m)</b>			
FT 510	White	10	1,9
FT 511	Maple	10	1,9
FT 512	Beech	10	1,9
FT 514	Oak	10	1,9
FT 515	Cherry	10	1,9
<b>BRACKET FOR SKIRTING BOARD</b>			
FT 501	White	25	0,336
<b>SCREW DOWEL PIN</b>			
FT 308	8x80	25	0,313
<b>INNER CORNER FOR SKIRTING BOARD</b>			
FT 502	White	5	0,092
FT 502 A	Maple	5	0,092
FT 502 B	Beech	5	0,092
FT 502 D	Oak	5	0,092
FT 502 E	Cherry	5	0,092
<b>OUTER CORNER FOR SKIRTING BOARD</b>			
FT 503	White	5	0,08
FT 503 A	Maple	5	0,08
FT 503 B	Beech	5	0,08
FT 503 D	Oak	5	0,08
FT 503 E	Cherry	5	0,08
<b>CONNECTING TRIM</b>			
FT 504	White	5	0,06
FT 504 A	Maple	5	0,06
FT 504 B	Beech	5	0,06
FT 504 D	Oak	5	0,06
FT 504 E	Cherry	5	0,06
<b>LEFT END PIECE FOR SKIRTING BOARD</b>			
FT 505	White	5	0,07
FT 505 A	Maple	5	0,07
FT 505 B	Beech	5	0,07
FT 505 D	Oak	5	0,07
FT 505 E	Cherry	5	0,07
<b>RIGHT END PIECE FOR SKIRTING BOARD</b>			
FT 506	White	5	0,07
FT 506 A	Maple	5	0,07
FT 506 B	Beech	5	0,07
FT 506 D	Oak	5	0,07
FT 506 E	Cherry	5	0,07
<b>CONNECTING SKIRTING BOARD</b>			
FT 520	White	1	0,16
FT 520 A	Maple	1	0,16
FT 520 B	Beech	1	0,16
FT 520 D	Oak	1	0,16
FT 520 E	Cherry	1	0,16

> WALL BRACKETS FOR PIPES <





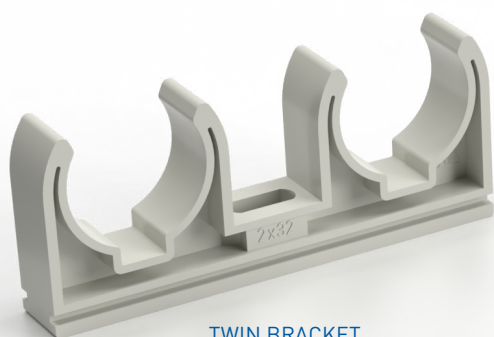
# WALL BRACKETS FOR PIPES

A comprehensive assortment of pipe clamps and brackets is used to fix all types of piping, namely PPR, CU, PEX or AL-PEX.

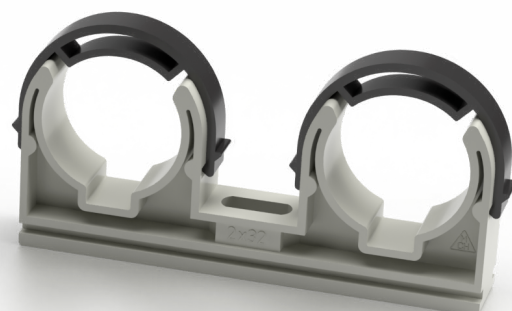
The clamps are made from PP/PA, with a hole, oval, or M6 thread. The production range includes options with a clip or with(out) a shackle. The assembly temperature range is 5 - 90 °C.

## BENEFITS:

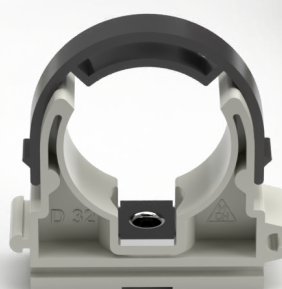
- ✓ simple assembly
- ✓ optionally fixed through oval/round hole or with an M6 nut
- ✓ allowing to fix pipes up to D110
- ✓ low weight, very good strength
- ✓ options with a clip, with or without a shackle
- ✓ suitable for all pipe types: PPR, CU, PEX, AL-PEX



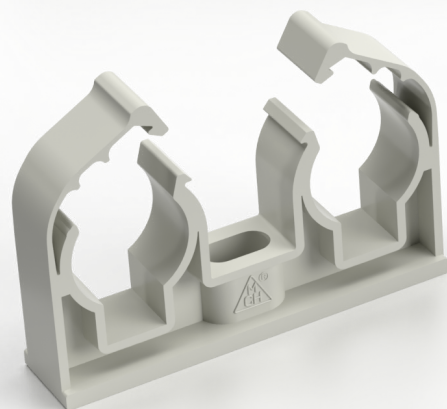
TWIN BRACKET



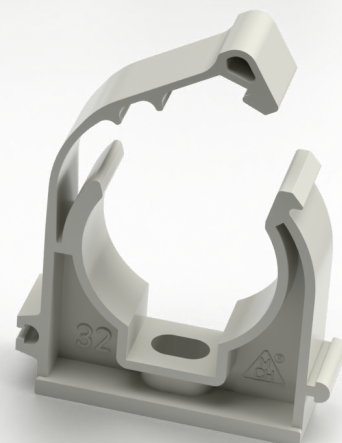
TWIN BRACKET WITH SHACKLE



BRACKET WITH SHACKLE  
AND M6 METAL NUT

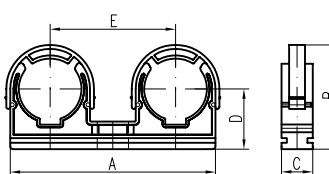
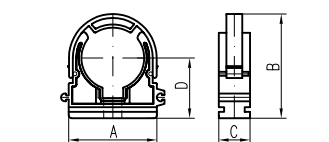
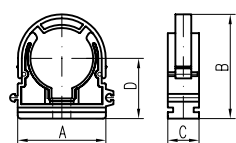
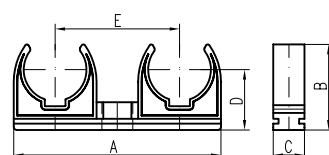
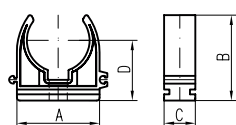
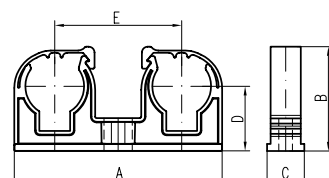
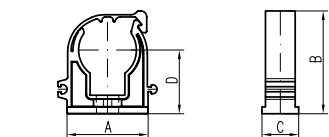


TWIN BRACKET WITH CLIP



BRACKET WITH A CLIP

PART NR.	DIMENSION [mm]	PIECES PER BAG	PIECES PER CARTON	WEIGHT [kg]
<b>BRACKET WITH A CLIP</b>				
1K020P	20	50	500	3,76
1K025P	25	50	500	4,68
1K032P	32	50	500	6,30
1K040P	40	50	400	8,30
1K050P	50	25	100/200	3,00/5,70
1K063P	63	25	100	3,90
<b>TWIN BRACKET WITH A CLIP</b>				
2K020P	2x20	50	400	6,00
2K025P	2x25	50	400	5,70
<b>BRACKET</b>				
10008P	8,5	50	2000	2,10
10016P	16	50	1000	7,00
10020P	20	50	500/1000	3,75/7,70
10025P	25	50	500	4,80
10032P	32	50	500	6,30
<b>TWIN BRACKET</b>				
20016P	2x16	50	800	12,20
20020P	2x20	50	600	10,50
20025P	2x25	50	400	9,20
20032P	2x32	50	400	8,70
<b>BRACKET WITH A SHACKLE</b>				
1T020P	20	50	500	6,00
1T025P	25	50	500	6,90
1T032P	32	50	500	6,80
1T040P	40	50	500	9,20
1T050P	50	25	100/200	3,80/7,30
1T063P	63	25	100	5,00
1T075P	75	1	50/100	4,40/8,60
1T090P	90	1	50	6,20
1T110P	110	1	20/30	2,70/4,30
K075	Protection ring for D75	10	100	1,99
<b>BRACKET WITH A SHACKLE AND M6-Z METAL NUT</b>				
Z1T016P	16	50	1000	7,40
Z1T020P	20	50	500	8,70
Z1T025P	25	50	500	11,50
Z1T032P	32	50	500	14,50
<b>TWIN BRACKET WITH A SHACKLE</b>				
20032PT	2x32	50	300	6,00
<b>LOW BRACKET</b>				
D20N	20	50	1000	5,14
D25N	25	50	1000	6,03



PART NR.	A [mm]	B [mm]	C [mm]	D [mm]	E [mm]
----------	-----------	-----------	-----------	-----------	-----------

## BRACKET WITH A CLIP

1K020P	36,9	38,7	15,6	25,1	
1K025P	43	44,7	15,6	27,7	
1K032P	52,8	51,8	16	30,4	
1K040P	63,1	62,3	16	35,7	
1K050P	77,7	74	19	40,3	
1K063P	94,7	92,7	19	51	

## TWIN BRACKET WITH A CLIP

2K020P	70,9	38,5	15,7	25,2	42,8
2K025P	88,5	44,7	15,9	27,8	54,5

## BRACKET

10008P	24,5	22,5	15,7	16,95	
10016P	33,7	29,9	15,7	24,2	
10020P	38,1	32,8	15,8	25,7	
10025P	42,6	38,3	15,8	27,9	
10032P	49,4	43,6	15,7	31,6	

## TWIN BRACKET

20016P	65,3	30,2	15,9	24,2	40,4
20020P	70,5	34,8	15,9	25,5	43,4
20025P	89	40	15,8	27,8	54,7
20032P	106,4	44,3	16	31,9	63,2

## BRACKET WITH A SHACKLE

1T020P	45,2	43,2	15,9	25,5	
1T025P	52,2	49,2	15,8	28,1	
1T032P	52,5	54,7	15,8	31,8	
1T040P	63,4	63,6	15,8	36,6	
1T050P	80,2	77	18,7	40,4	
1T063P	96,3	91	18,9	46,6	
1T075P	120,1	90,6	24,1	62,5	
1T090P	138,7	129,3	24,2	68,3	
1T110P	164	149,2	24	78,3	
K075	Protection ring for D75	10	100	1,99	

## BRACKET WITH A SHACKLE AND M6-Z METAL NUT

Z1T016P	33,7	38	15,7	24,2	
Z1T020P	45,2	43,2	15,9	25,5	
Z1T025P	52,2	49,2	15,8	28,1	
Z1T032P	52,5	54,7	15,8	31,8	

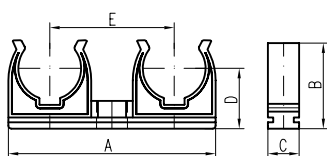
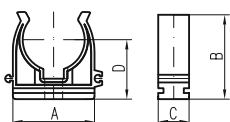
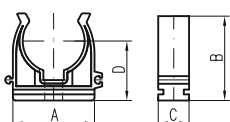
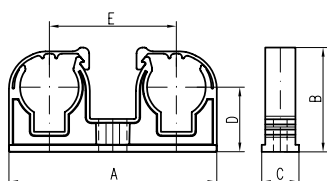
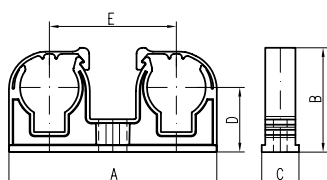
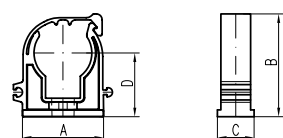
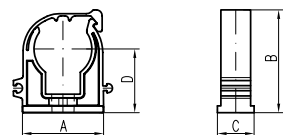
## TWIN BRACKET WITH A SHACKLE

20032PT	110,8	53,4	16	31,8	63,1
---------	-------	------	----	------	------

## LOW BRACKET

D20N	28,1	25,4	14,1	15,8	
D25N	32,8	29,2	14,1	17,9	

PART NR.	DIMENSION [mm]	PIECES PER BAG	PIECES PER CARTON	WEIGHT [kg]
<b>BRACKET WITH A CLIP</b>				
1K015B	15	50	1000	4,20
1K018B	18	50	500	3,10
1K022B	22	50	500	3,70
1K028B	28	50	500	5,50
<b>BRACKET WITH A CLIP AND M6-Z METAL NUT</b>				
Z1K015B	15	50	1000	6,10
Z1K018B	18	50	500	4,50
Z1K022B	22	50	500	5,10
Z1K028B	28	50	500	6,90
<b>TWIN BRACKET WITH A CLIP</b>				
2K015B	2x15	50	500	5,30
2K018B	2x18	50	500	5,80
2K022B	2x22	50	400	5,40
2K028B	2x28	50	250	4,40
<b>TWIN BRACKET WITH A CLIP AND M6-Z METAL NUT</b>				
Z2K015B	2x15	50	500	6,70
Z2K018B	2x18	50	500	7,20
Z2K022B	2x22	50	400	6,30
Z2K028B	2x28	50	250	5,00
<b>BRACKET</b>				
10010Cu	10	50	2000	9,00
10012Cu	12	50	1000	5,40
10015Cu	15	50	1000	5,40
10018Cu	18	50	1000	6,80
10022Cu	22	50	1000	7,70
<b>BRACKET WITH M6-Z METAL NUT</b>				
Z10012Cu	12	50	1000	7,10
Z10015Cu	15	50	1000	8,20
Z10018Cu	18	50	1000	9,50
Z10022Cu	22	50	1000	10,40
<b>TWIN BRACKET</b>				
20012Cu	2x12	50	500	5,30
20015Cu	2x15	50	800	9,40
20018Cu	2x18	50	400	6,00
20022Cu	2x22	50	500	8,60



PART NR.	A [mm]	B [mm]	C [mm]	D [mm]	E [mm]
----------	-----------	-----------	-----------	-----------	-----------

## BRACKET WITH A CLIP

1K015B	28,9	30,8	15,7	20,8	
1K018B	32,2	34,5	15,8	22,2	
1K022B	37,4	39,7	15,7	25	
1K028B	45,5	46,5	15,7	28	

## BRACKET WITH A CLIP AND M6-Z METAL NUT

Z1K015B	28,9	30,8	15,7	20,8	
Z1K018B	32,2	34,5	15,8	22,2	
Z1K022B	37,4	39,7	15,7	25	
Z1K028B	45,5	46,5	15,7	28	

## TWIN BRACKET WITH A CLIP

2K015B	56	30,9	15,7	20,5	34,8
2K018B	65,4	34,4	15,7	22,2	40
2K022B	75,5	42,2	15,7	27,4	45
2K028B	91,4	46,4	15,6	27,7	52,7

## TWIN BRACKET WITH A CLIP AND M6-Z METAL NUT

Z2K015B	56	30,9	15,7	20,5	34,8
Z2K018B	65,4	34,4	15,7	22,2	40
Z2K022B	75,5	42,2	15,7	27,4	45
Z2K028B	91,4	46,4	15,6	27,7	52,7

## BRACKET

10010Cu	24,5	23,5	15,8	17,8	
10012Cu	28,2	28,5	15,7	19,9	
10015Cu	29,8	30,3	15,7	20,6	
10018Cu	33,6	31,5	15,8	22,3	
10022Cu	38,7	35	15,7	24,7	

## BRACKET WITH M6-Z METAL NUT

Z10012Cu	28,2	28,5	15,7	19,9	
Z10015Cu	29,8	30,3	15,7	20,6	
Z10018Cu	33,6	31,5	15,8	22,3	
Z10022Cu	38,7	35	15,7	23,9	

## TWIN BRACKET

20012Cu	51,6	28,8	15,8	21,1	33,1
20015Cu	58,1	32,2	15,8	22,7	35,9
20018Cu	67,2	33,9	15,8	24,2	40,9
20022Cu	75,6	39,7	15,8	26,2	44,9

# WALL BRACKETS FOR COPPER PIPES



PART NR.	DIMENSION [mm]	PIECES PER BAG	PIECES PER CARTON	WEIGHT [kg]
<b>TWIN BRACKET WITH M6-Z METAL NUT</b>				
Z20012Cu	2x12	50	500	6,80
Z20015Cu	2x15	50	800	11,50
Z20018Cu	2x18	50	400	7,00
Z20022Cu	2x22	50	600	11,60
<b>BRACKET WITH A SHACKLE</b>				
1T028Cu	28	50	500	5,70
1T035Cu	35	50	500	7,20
<b>BRACKET WITH A SHACKLE AND M6-Z METAL NUT</b>				
Z1T028Cu	28	50	500	7,30
Z1T035Cu	35	50	500	8,40
<b>TWIN BRACKET WITH A SHACKLE</b>				
20028CuT	2x28	50	300	8,00
<b>TWIN BRACKET WITH A SHACKLE AND M6-Z METAL NUT</b>				
Z20028CuT	2x28	50	300	9,20



# BRACKETS FOR ALUMINIUM-PLASTIC PIPES

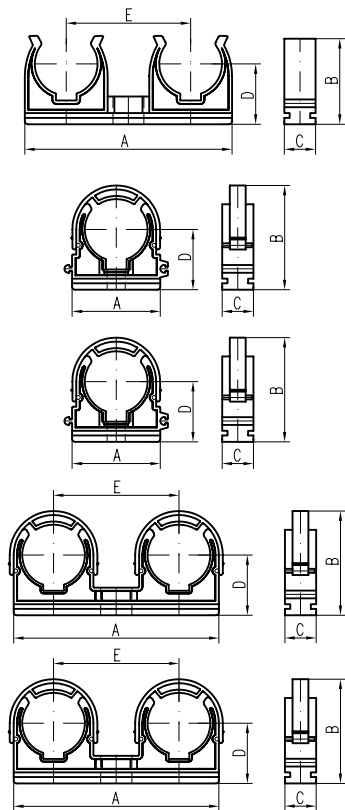


The brackets are used to fix aluminium plastic pipes. They allow pipes to be easily installed and dismantled, with space left for pipe dilation. They are made with an over hole (option with no shackle). They are made from polypropylene, with heat resistance up to 90°C.

PART NR.	DIMENSION [mm]	PIECES PER BAG	PIECES PER CARTON	WEIGHT [kg]
<b>BRACKET FOR ALUMINIUM-PLASTIC PIPES</b>				
10016B	16	50	1000	7,00
10020B	20	50	1000	7,70
10025B	25/26	50	500	4,80
<b>TWIN BRACKET FOR ALUMINIUM-PLASTIC PIPES</b>				
20016B	2x16	50	800	12,20
20020B	2x20	50	600	10,50
20025B	2x25/26	50	400	9,20



# WALL BRACKETS FOR COPPER PIPES



PART NR.	A [mm]	B [mm]	C [mm]	D [mm]	E [mm]
----------	-----------	-----------	-----------	-----------	-----------

## TWIN BRACKET WITH M6-Z METAL NUT

Z20012Cu	51,6	28,8	15,8	21,1	33,1
Z20015Cu	58,1	32,2	15,8	22,7	35,9
Z20018Cu	67,2	33,9	15,8	24,2	40,9
Z20022Cu	75,6	39,7	15,8	26,2	44,9

## BRACKET WITH A SHACKLE

1T028Cu	48	52,5	15,8	29,3	
1T035Cu	57	55,1	15,8	31	

## BRACKET WITH A SHACKLE AND M6-Z METAL NUT

Z1T028Cu	48	52,5	15,8	29,3	
Z1T035Cu	57	55,1	15,8	31	

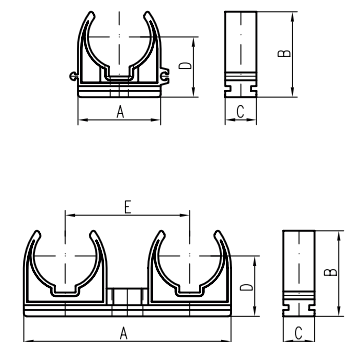
## TWIN BRACKET WITH A SHACKLE

20028CuT	104,3	51,8	15,8	29,5	60,1
----------	-------	------	------	------	------

## TWIN BRACKET WITH A SHACKLE AND M6-Z METAL NUT

Z20028CuT	104,3	51,8	15,8	29,5	60,1
-----------	-------	------	------	------	------

# BRACKETS FOR ALUMINIUM-PLASTIC PIPES



PART NR.	A [mm]	B [mm]	C [mm]	D [mm]	E [mm]
----------	-----------	-----------	-----------	-----------	-----------

## BRACKET FOR ALUMINIUM-PLASTIC PIPES

10016B	33,7	29,9	15,7	24,2	33,1
10020B	38,1	32,8	15,8	25,7	35,9
10025B	42,6	38,3	15,8	27,9	40,9

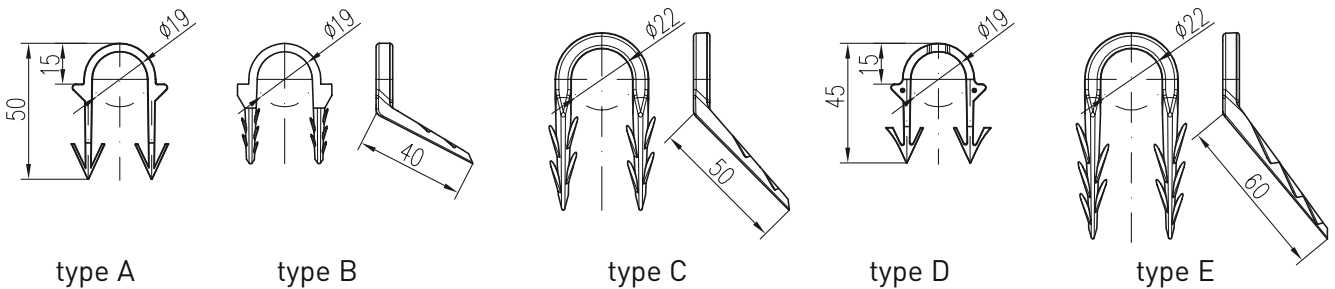
## TWIN BRACKET FOR ALUMINIUM-PLASTIC PIPES

20016B	65,3	30,2	15,9	24,2	40,4
20020B	70,5	34,8	15,9	24,2	43,4
20025B	89	40	15,9	25,5	53,7

## FLOOR BRACKETS FOR D14–22mm

Floor brackets are used to fix floor heating pipes in their place. Bracket types A, B, C and E are applied manually only. A tacker must be used to apply type D. The tacker is not suggested for other brackets.

PART NUMBER	PIECES PER BAG	PIECES PER CARTON	WEIGHT [kg/carton]
<b>A 303</b>	50	1000/2500	7,00
<b>B 304</b>	50	1000/2000	5,30
<b>C 312</b>	50	1000	4,40
<b>D 305</b>	200	2000	4,68
<b>E 306</b>	50	1000	4,60



## TACKER – TO APPLY FLOOR BRACKETS OF TYPE D

PART NUMBER	NUMBER OF ITEMS	WEIGHT [kg/pcs]
<b>TAC 1</b>	1	2,00

## INSULATION STAPLE

PART NUMBER	NAME	PIECES PER BAG	PIECES PER CARTON	WEIGHT [kg/carton]
<b>301 S</b>	light	100	10000	3,10
<b>301 T</b>	dark	100	10000	3,10



**FLOOR BRACKETS**  
type A/type B/type C/type E/type D



**INSULATION STAPLE**  
dark/light

**TACKER**  
for applying floor  
brackets of type D

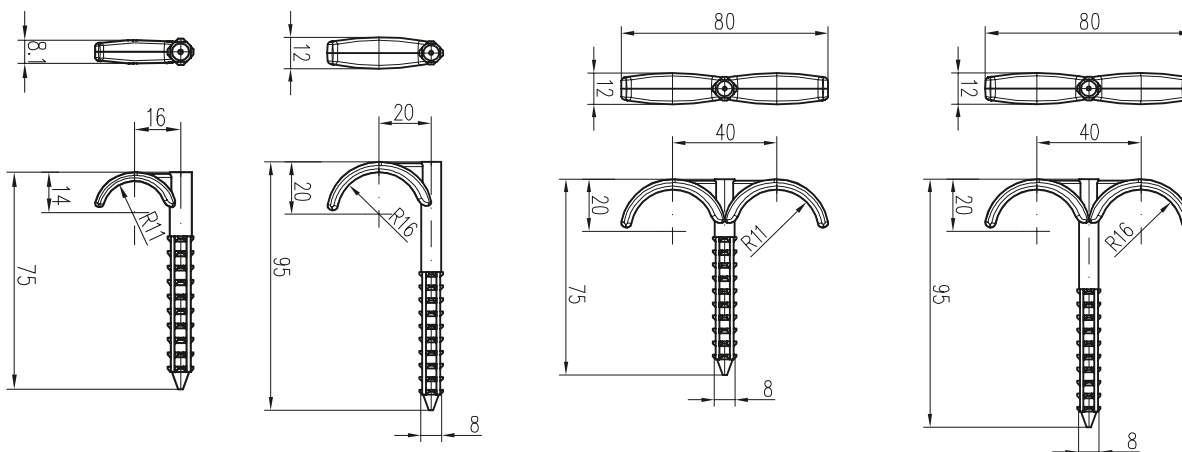
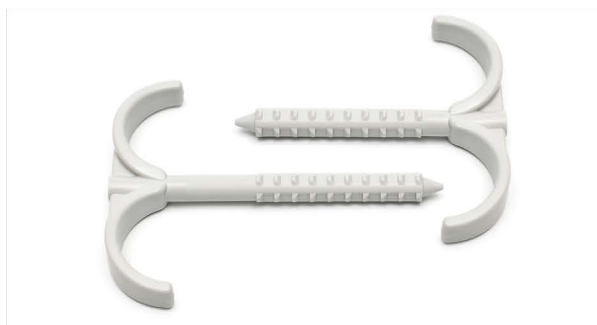
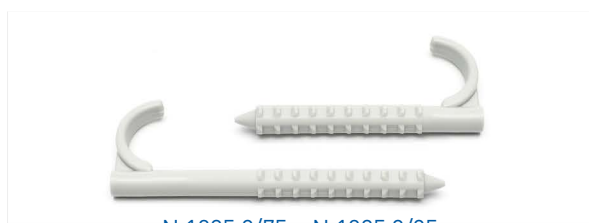
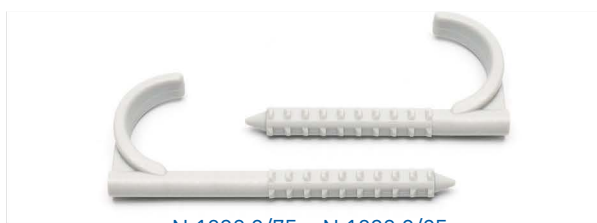




## HAMMER-IN PLASTIC DOWELS

The hammer-in plastic dowels are designed to allow a fast and easy installation and assembly of pipes, cable tracts, protection tubing, and the like. They are installed through drilled holes D8mm using a hammer. Made from PA, with heat resistance up to 130 °C.

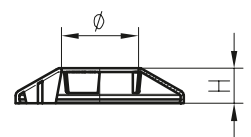
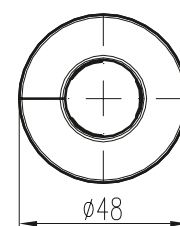
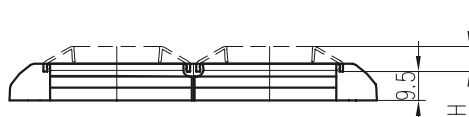
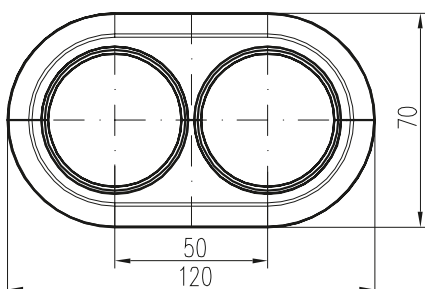
PART NUMBER	DIAMETER [mm]	PIECES PER BAG	PIECES PER CARTON	WEIGHT [kg/carton]
N 1032 8/75	8	50	500	2,98
N 1032 8/95	8	50	500	3,50
N 1025 8/75	8	50	1000	2,24
N 1025 8/95	8	50	500	2,64
N 2032 8/75	8	50	500	4,02
N 2032 8/95	8	50	500	4,60
N 2025 8/75	8	50	1000	2,68
N 2025 8/95	8	50	500	3,18



## PIPE TRIMS (ROSETTES) D12–28mm

Segmented pipe caps are used to cover pipe passages in floors and walls. This comprehensive size range allows to use caps for pipe sizes from D12 to D28mm. The KB/KCH frame is used to install two pipe caps; the cap frame is segmented.

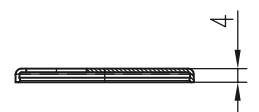
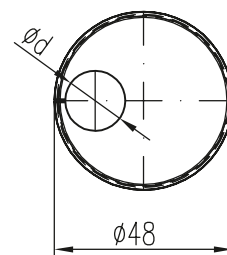
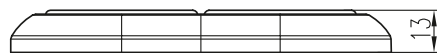
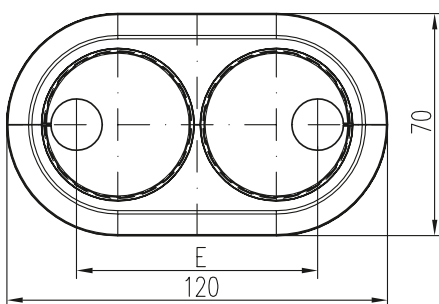
PART NUMBER	DIAMETER [mm]	H [mm]	PIECES PER BAG	PIECES PER CARTON
<b>SINGLE TRIM, WHITE</b>				
KB 1012	12	13	20	1000
KB 1015	15	12	20	1000
KB 1016	16	11,7	20	1000
KB 1018	18	11,1	20	1000
KB 1020	20	10,6	20	1000
KB 1022	22	10	20	1000
KB 1025	25-26	9,1	20	1000
KB 1028	28	8,2	20	1000
<b>SINGLE TRIM, CHROME-PLATED</b>				
KCH 1012	12	13	20	1000
KCH 1015	15	12	20	1000
KCH 1016	16	11,7	20	1000
KCH 1018	18	11,1	20	1000
KCH 1020	20	10,6	20	1000
KCH 1022	22	10	20	1000
KCH 1025	25-26	9,1	20	1000
KCH 1028	28	8,2	20	1000
<b>TWIN TRIM FRAME, WHITE</b>				
KB 2000	-	-	10	200
<b>TWIN TRIM FRAME, CHROME-PLATED</b>				
KCH 2000	-	-	10	200



## ECENTRIC PIPE TRIMS (ROSETTES) D15– 22mm

The eccentric segmented caps are used to cover pipe passages in floors and walls where no standard distance is adhered to. The eccentric caps allow to adjust the pipe size to installation needs, using the table below. This comprehensive size range from D15 to D22mm. The KB/KCH frame is used to install two pipe caps; the cap frame is segmented.

PART NUMBER	DIAMETER [mm]	E <sub>MIN</sub> [mm]	E <sub>MAX</sub> [mm]	PIECES PER BAG	PIECES PER CARTON
<b>SINGLE ECCENTRIC TRIM, WHITE</b>					
KB E015	15	23	77	20	1000
KB E016	16	24	76	20	1000
KB E018	18	26	74	20	1000
KB E020	20	28	72	20	1000
KB E022	22	30	70	20	1000
<b>SINGLE ECCENTRIC TRIM, CHROME-PLATED</b>					
KCH E015	15	23	77	20	1000
KCH E016	16	24	76	20	1000
KCH E018	18	26	74	20	1000
KCH E020	20	28	72	20	1000
KCH E022	22	30	70	20	1000
<b>TWIN TRIM FRAME, WHITE</b>					
KB 2000	-	-	-	10	200
<b>TWIN TRIM FRAME, CHROME-PLATED</b>					
KCH 2000	-	-	-	10	200

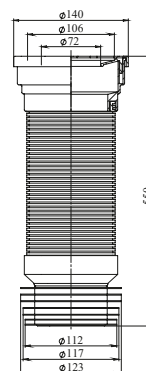


# TOILET CONNECTORS



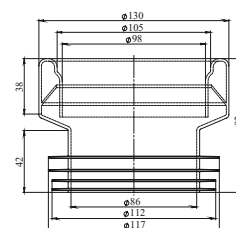
Toilet connector, flexible, 550mm

PART NUMBER	PIECES /PACKAGING	WEIGHT [kg/pcs]
T 550	1/96	0,44



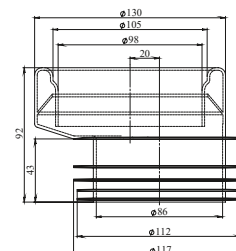
Toilet connector, straight

PART NUMBER	PIECES /PACKAGING	WEIGHT [kg/pcs]
T 30	1/96	0,31



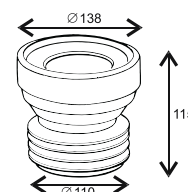
Toilet connector, eccentric

PART NUMBER	PIECES /PACKAGING	WEIGHT [kg/pcs]
T 40	1/96	0,31



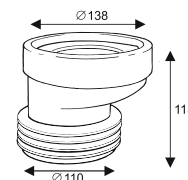
Toilet connector, short, straight

Obj. číslo	PIECES /PACKAGING	WEIGHT [kg/pcs]
CH 530 E	12	0,27



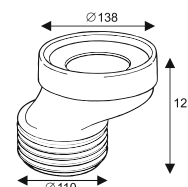
Toilet connector, short, 20mm eccentric piece

PART NUMBER	PIECES /PACKAGING	WEIGHT [kg/pcs]
CH 530 20	12	0,27



Toilet connector, short, 40mm eccentric piece

PART NUMBER	PIECES /PACKAGING	WEIGHT [kg/pcs]
CH 530 40	12	0,29

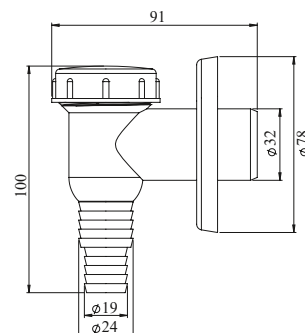


# OTHER ASSORTMENT



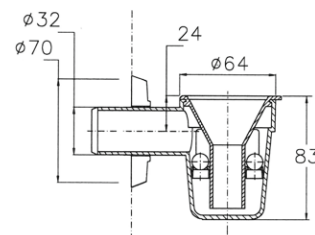
Washing machine siphon, white

PART NUMBER	PIECES /PACKAGING	WEIGHT [kg/pcs]
CH 529	10	0,10



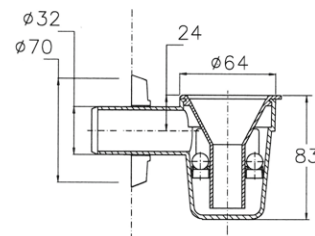
Draining tank with a twin anti-odour closing and a rossete, white

PART NUMBER	PIECES /PACKAGING	WEIGHT [kg/pcs]
CH 517 1	10	0,10



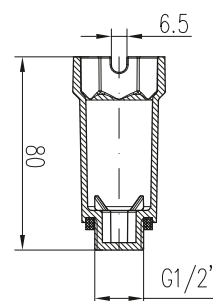
Draining tank with a twin anti-odour closing and a rossete, chrome plated

PART NUMBER	PIECES /PACKAGING	WEIGHT [kg/pcs]
CH 517 1 K	10	0,09



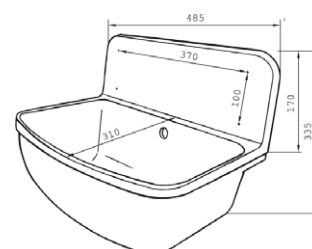
Pressure plug 1/2" blue/red

PART NUMBER	PIECES /PACKAGING	WEIGHT [kg/pcs]
CH 523 1 A	10	0,02
CH 523 1 B	10	0,02



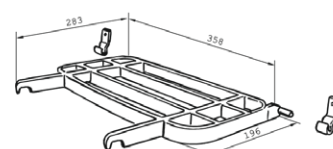
Plastic sink with a siphon

PART NUMBER	PIECES /PACKAGING	WEIGHT [kg/pcs]
CH 350	1	3,11



Plastic grid, loading capacity 15 kg

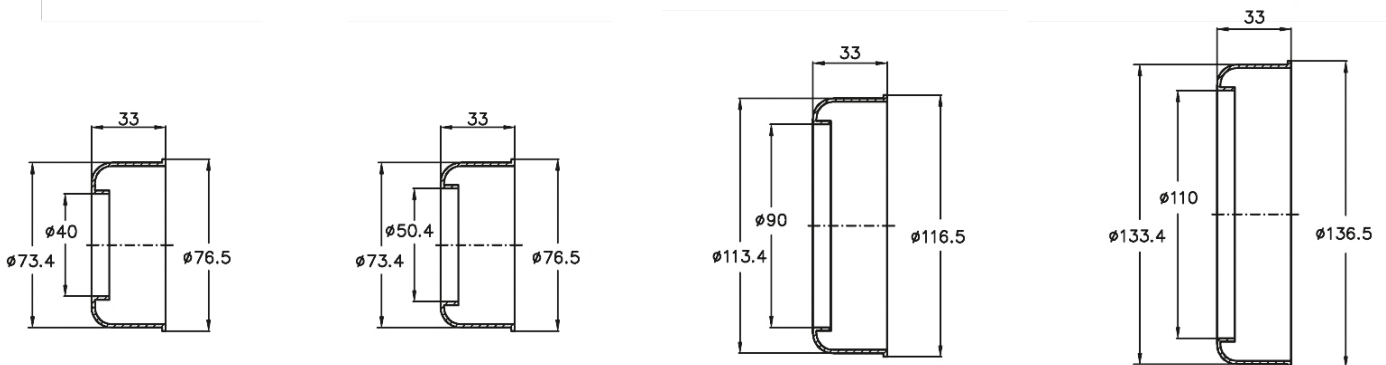
PART NUMBER	PIECES /PACKAGING	WEIGHT [kg/pcs]
CH 350 1	1	0,27



## PIPE SLEEVES

The pipe sleeves are used to cover drainage pipes in diameters of 40/50/90/110mm.

PART NUMBER	DIAMETER [mm]	PACKAGING [PCS]	WEIGHT [kg/packaging]
CH 067 40	40	5	0,05
CH 067 50	50	5	0,06
CH 067 90	90	5	0,35
CH 067 110	110	5	0,30



## CONTACTS

### Company owner:

Miroslav Chuděj  
Phone: +420 571 757 730  
chudej@chudej.cz

### Export director:

Ing. Karel Hák  
Phone: +420 723 126 125  
export@chudej.cz

### Assistant of export director:

Bc. Dominika Jahodová  
Tel.: +420 777 706 766  
Phone: +420 571 757 745  
trade@chudej.cz

### Assistant of export director:

Ing. Vendula Žatková  
Phone: +420 571 757 745  
Fax: +420 571 757 737  
info@chudej.cz

### Manager for Western Balkan:

Bekim Hasani  
Phone: +386 49 112 080  
Phone: +383 49 112 080  
bh@chudej.cz

### Financial department:

Alena Randýsková  
randyskova@chudej.cz





CZECH PRODUCER

## Chuděj s.r.o.

---

756 62 HUTISKO-SOLANEC 310

CZECH REPUBLIC

TEL.: +420 723 126 125

+420 571 757 745

FAX: +420 571 757 737

export@chudej.cz

 Chuděj sro



[www.chudej.cz](http://www.chudej.cz)